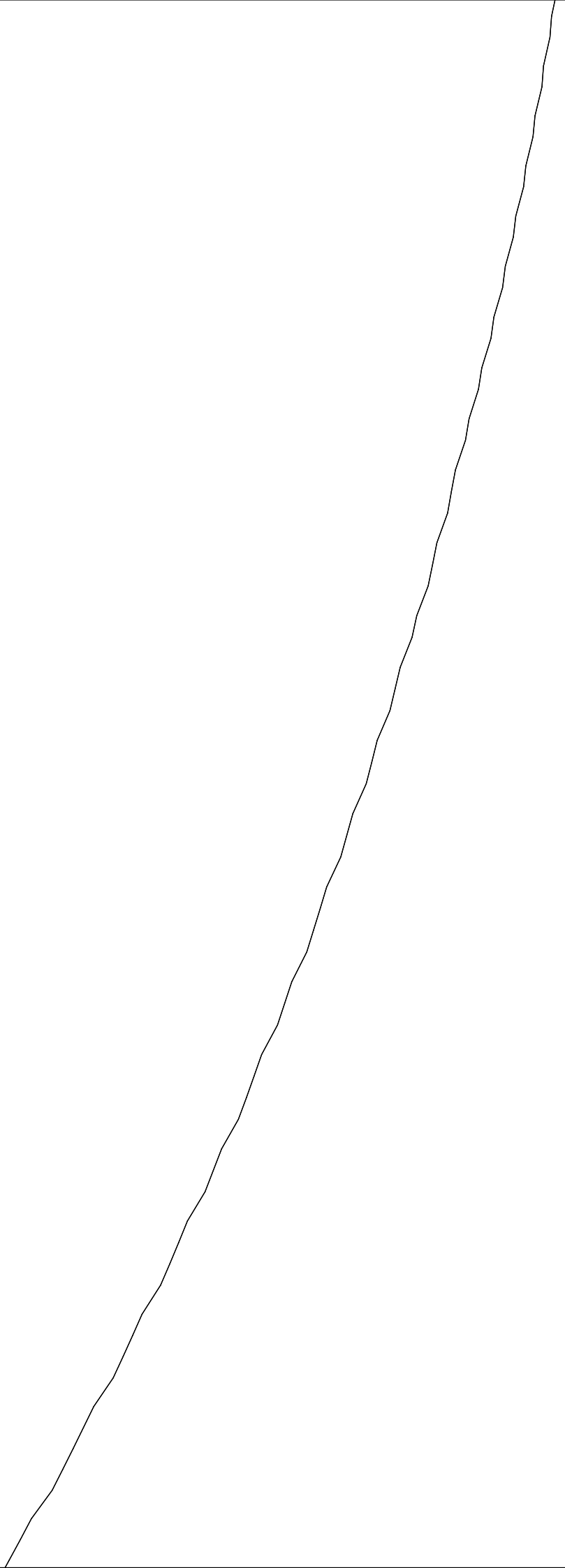
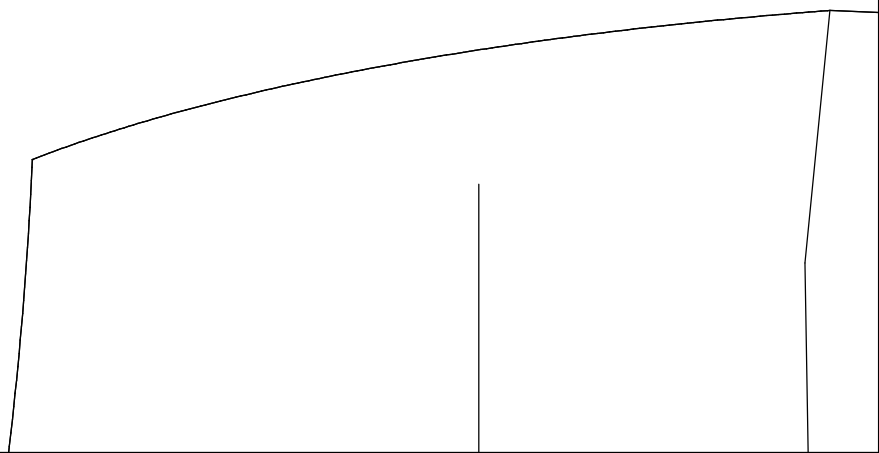


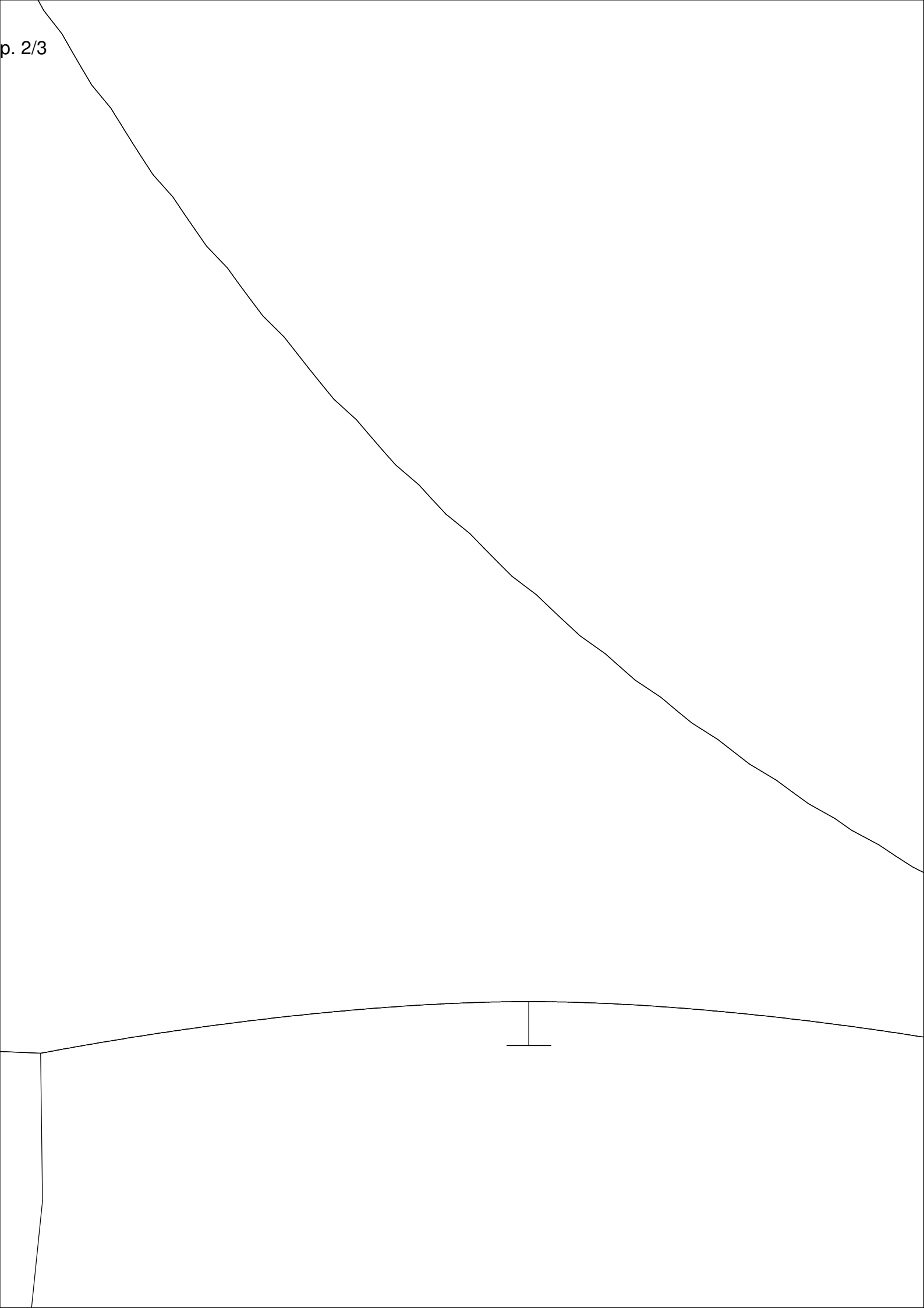
НИЖНЯЯ_ЧАСТЬ_СП
Тип Полотна ВЕРХ,
ж=164-96-78-102

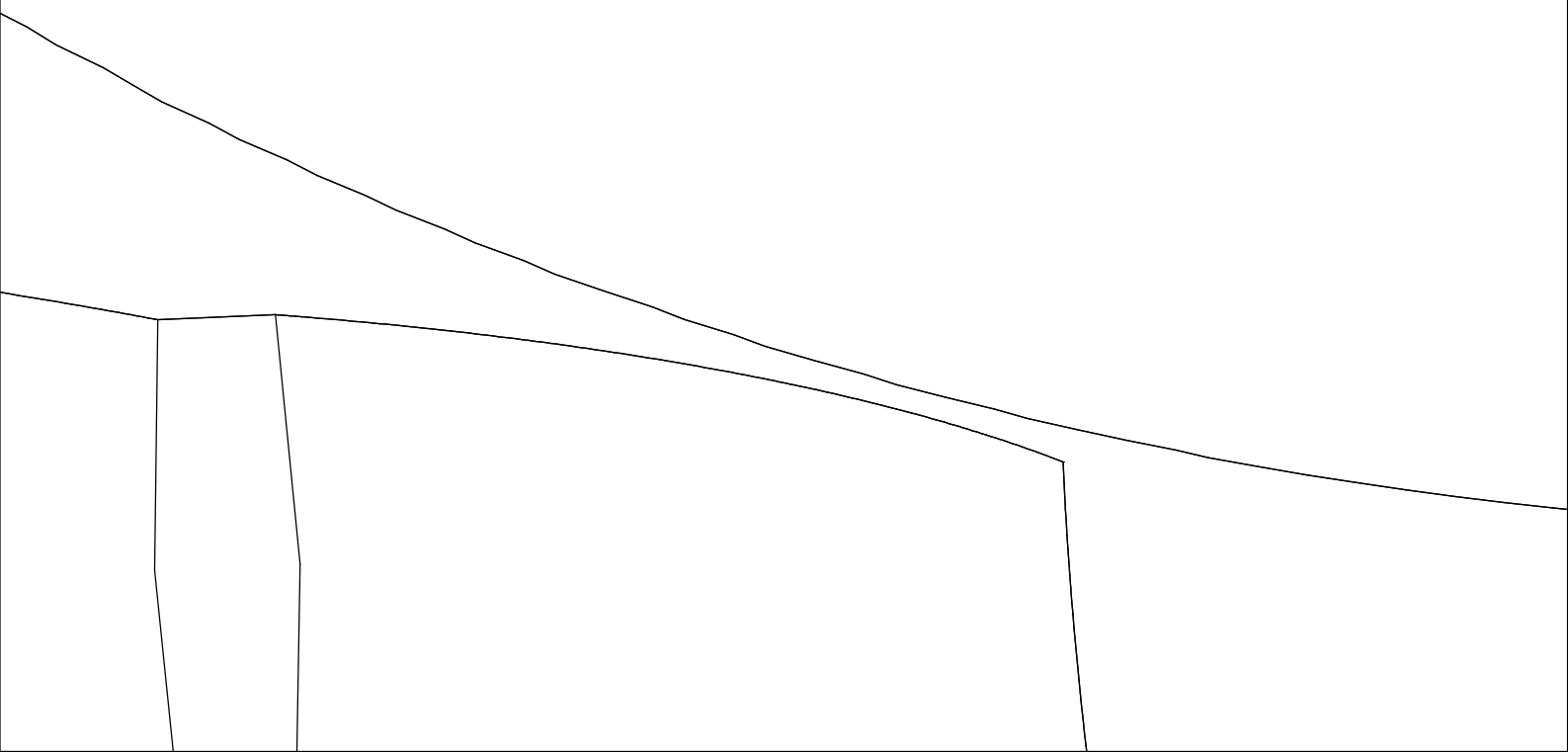
ИНКИ

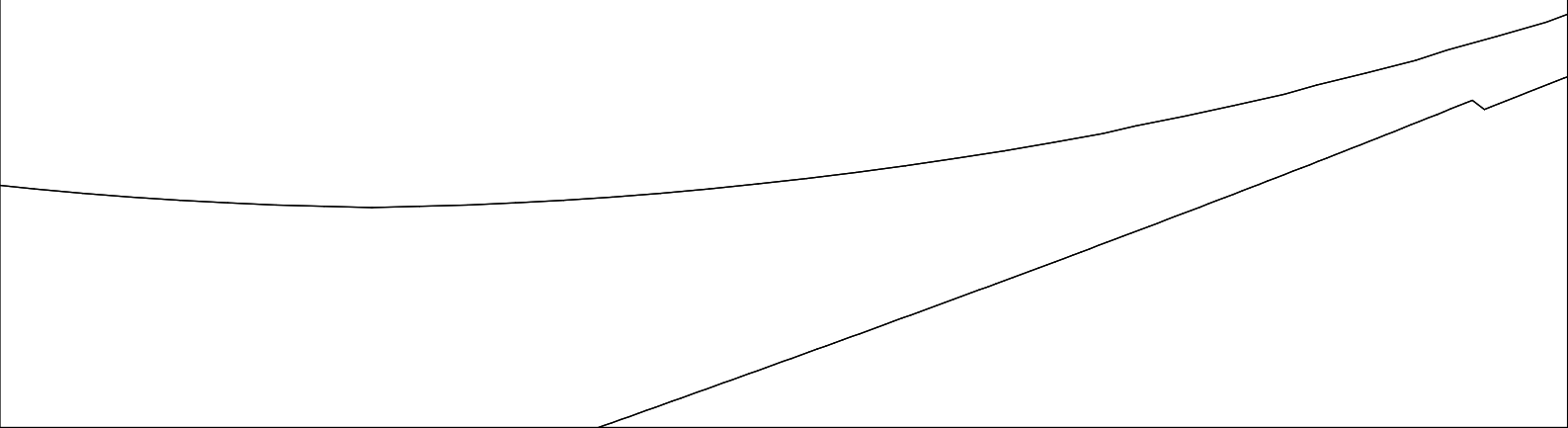
Кл. Дет. $= (1, 0)$

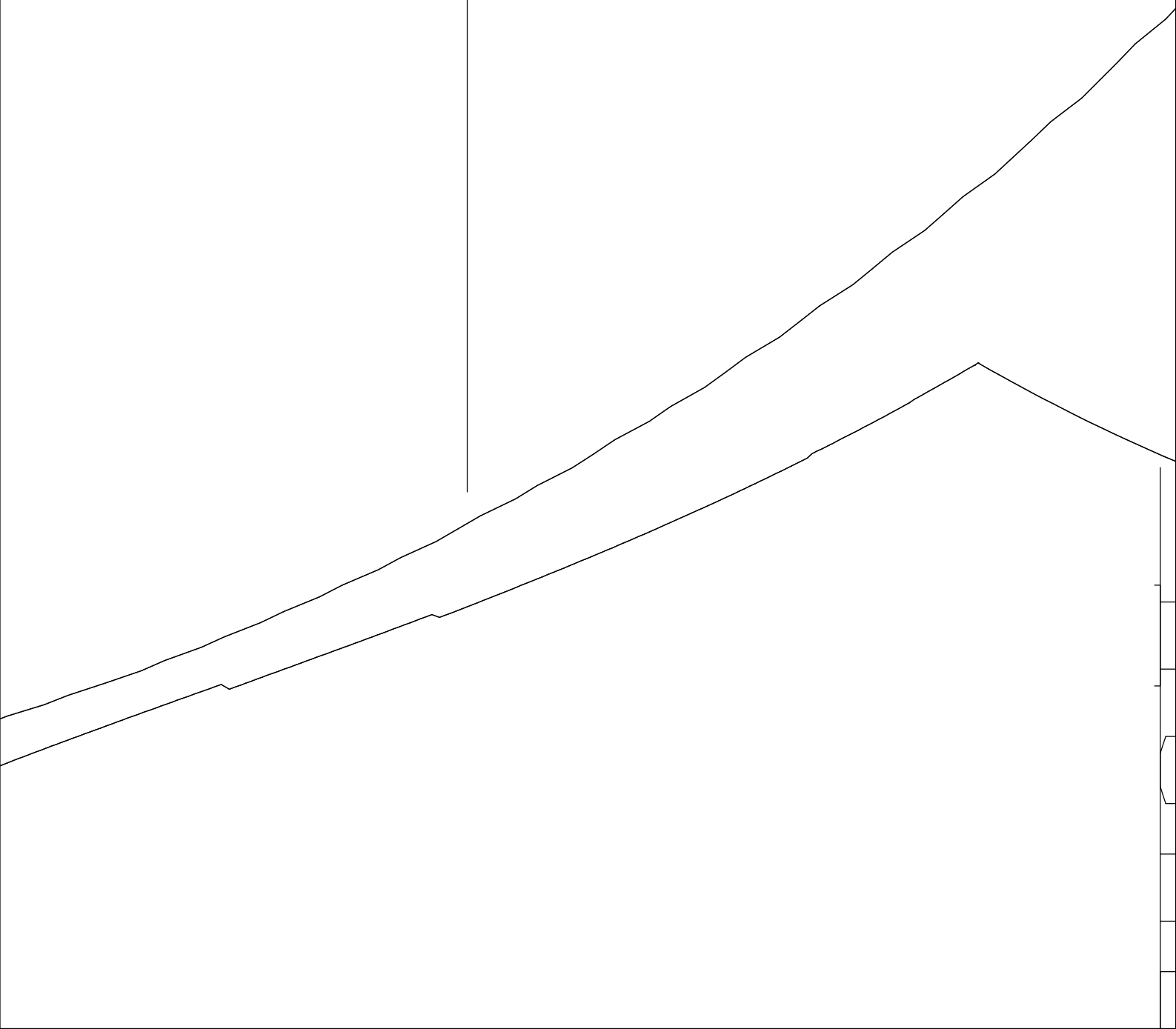
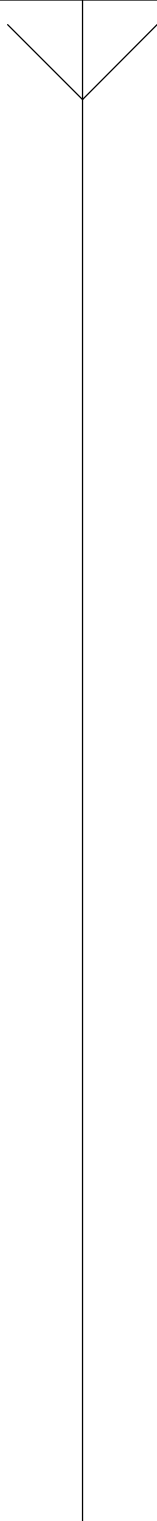


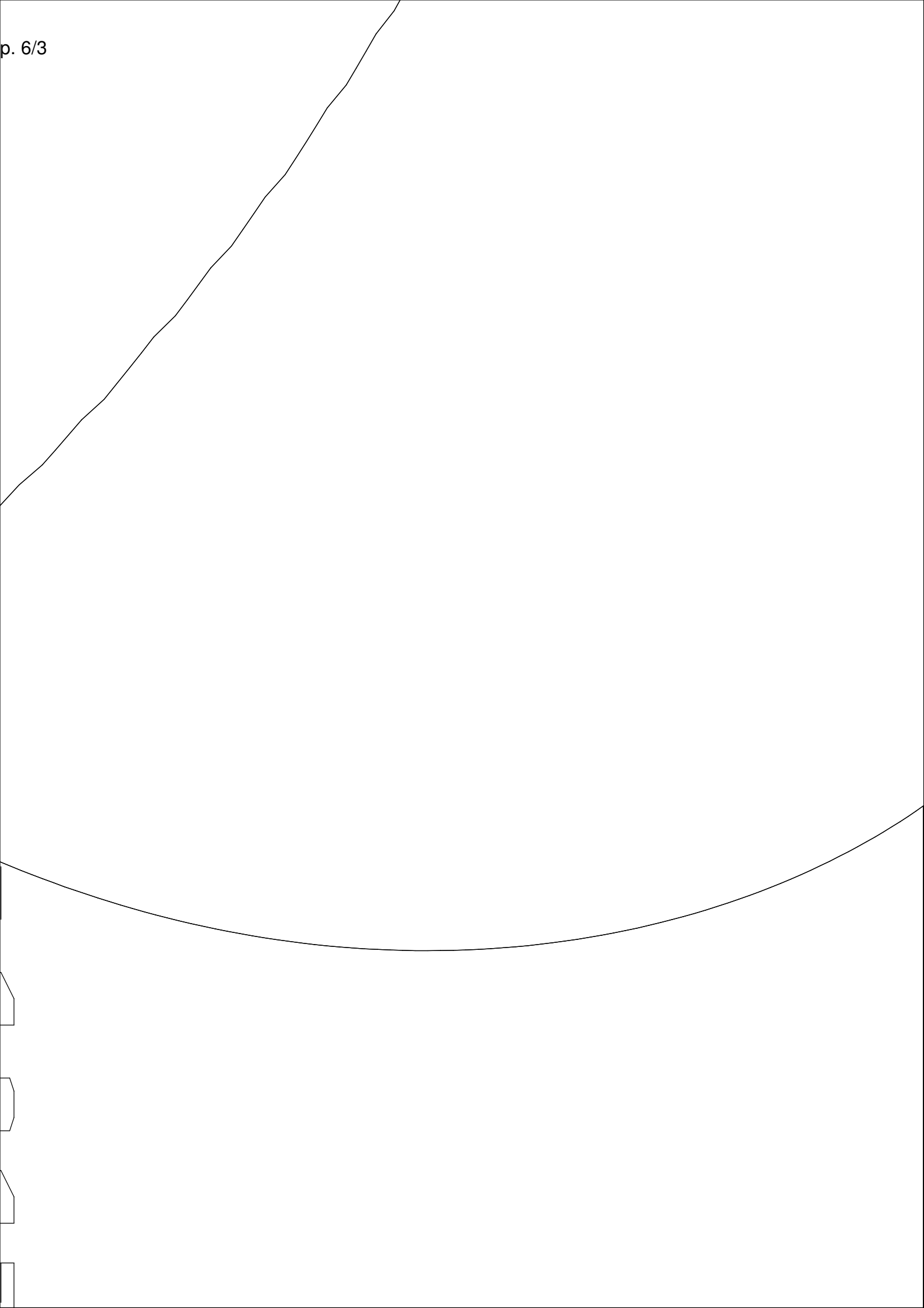


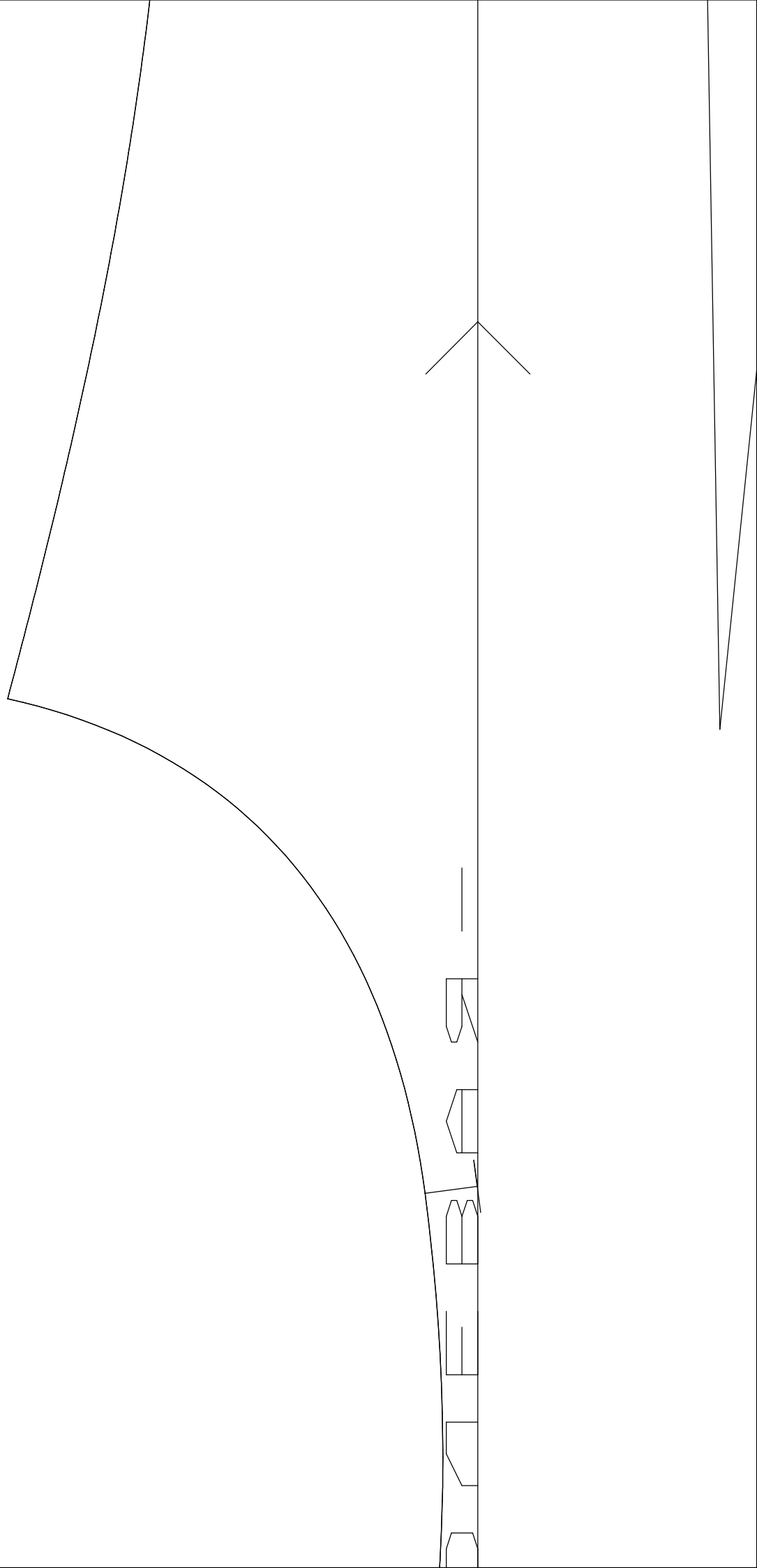












СТБ-СПИHKИ

аВЕРХ, КЛ. ДЕТ. = (1, 0)
8-102

БЕРХНЯ ЧА-
ТН ПОЛОТН
Ж=164-96-7

T

ДЛИННА БЕЙКИ 106.00

ВЕРХНЯЯ_ЧАСТЬ_ПОЛОЧКИ

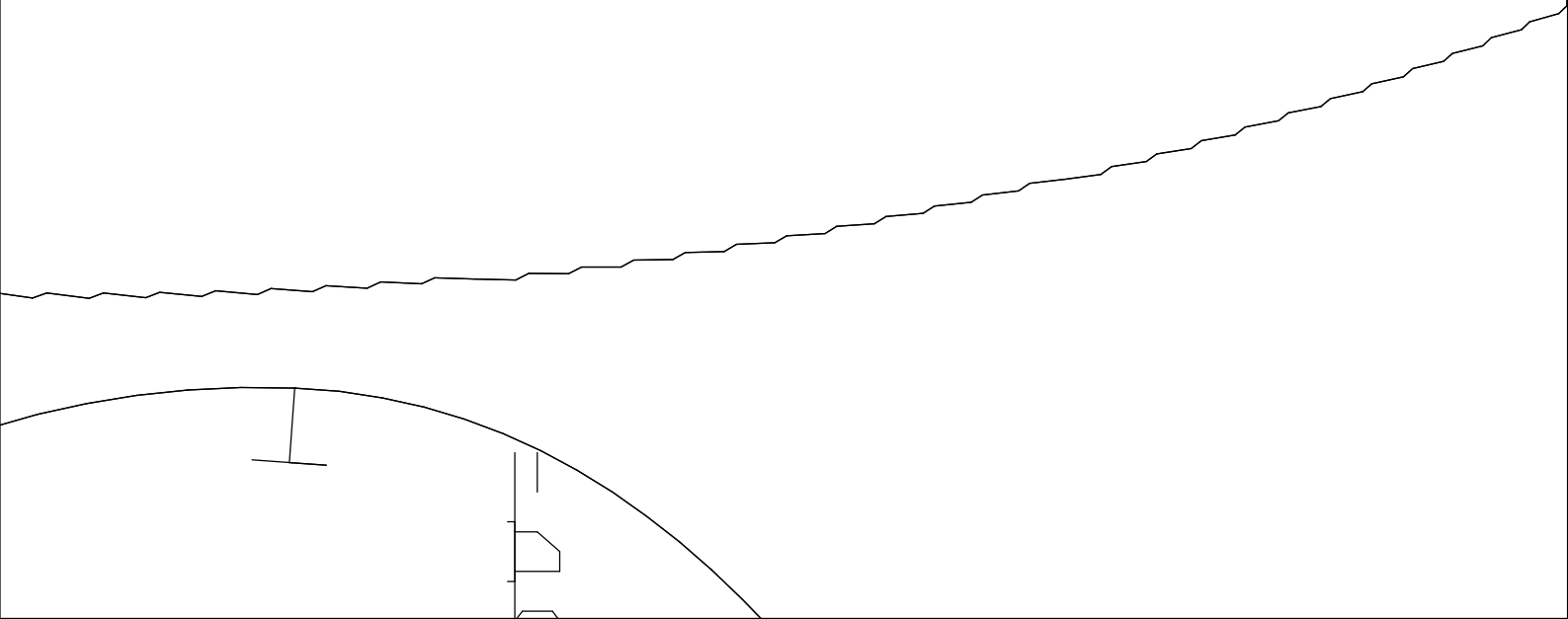
НИЖНЯЯ_ЧАСТЬ_ПОЛОЧКИ

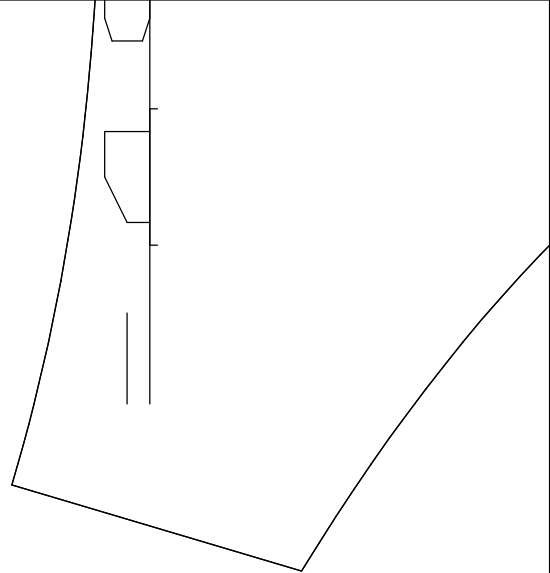
Тип Полотна ВЕРХ, Кл. Дет.

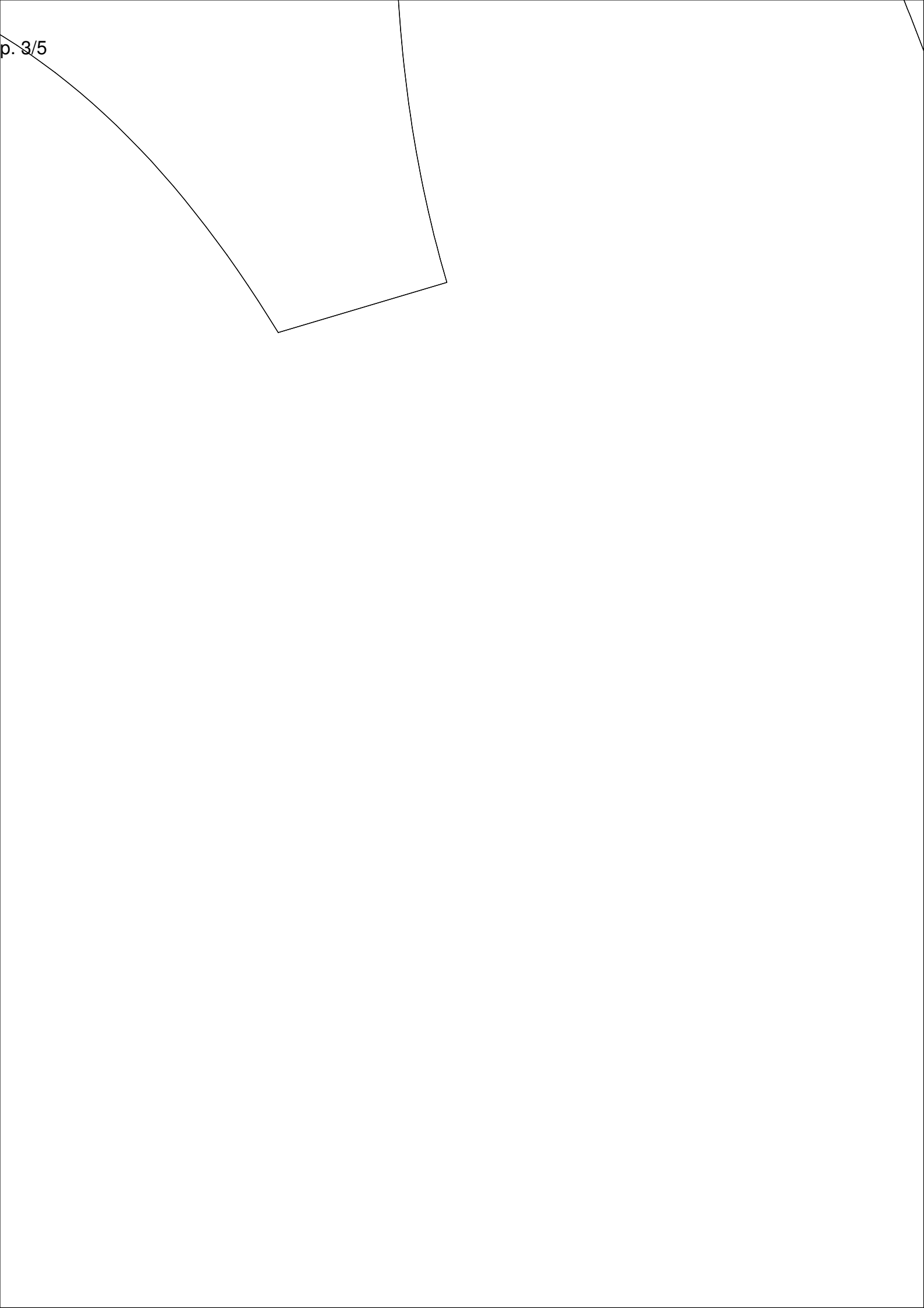
Ж=164-96-78-102



$= (1, 1)$



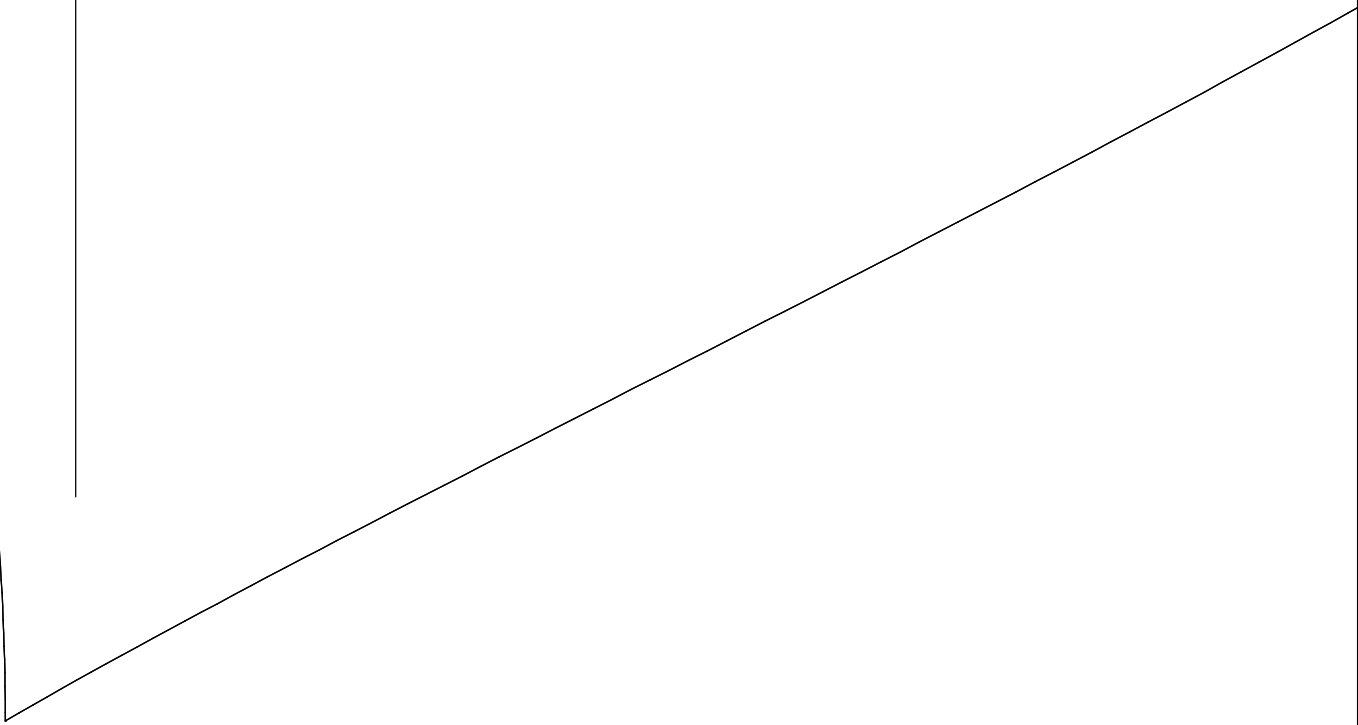
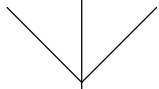




Тип полотна ВЕРХ, Кл. Дет. = (1, 1)

р. 4/5

Ж=164-96-78-102





Technical drawing of a sleeve pattern piece. The piece is a trapezoidal shape with a curved top edge and a straight bottom edge. A small vertical line segment is drawn near the top right corner. The text 'РУКАВ' is written in the upper right area, and 'Тип Полотна ВЕРХ,' and 'ж=164-96-78-102' are written below it.

РУКАВ

Тип Полотна ВЕРХ,

ж=164-96-78-102

Кл. Дет. = (1,1)

